



**RACE INSTRUCTIONS**

**DOUBLE HANDED AND FULLY CREWED**

**GARMIN ROUND DENMARK RACE INSHORE**

**START IN AARHUS**

**Dates:**  
**August 7<sup>th</sup> – 16<sup>th</sup> 2025**

**Venue:**  
**The Danish, Swedish and German waters**

**Organizer:**  
**Aarhus International Sailing Center**

Any changes to these Race Instructions will be published on the Official Notice Board to be found on the event website:

[www.garminrounddenmarkrace.com](http://www.garminrounddenmarkrace.com)

*Published: June 23, 2025*

GARMIN®

# GARMIN®

## JOIN THE SAILING CLUB



## 1 Rules

- The race is governed by the rules stated in the Garmin Round Denmark Race (GRDR) Event Regulations.
- The special regulations for navigation in certain Danish, Swedish and German waters.  
All traffic separations must be respected in accordance with COLREG rule 10. The competitors are required to pay attention to commercial traffic as well as to other competitors in the race.
- Navigation lights:  
All participating boats must be equipped with fixed statutory navigation lights as described in COLREG rule 25(a) or 25(b).  
This also applies to boats under 7 meters of length.

## 2 Schedule

Thursday	August 7 <sup>th</sup>	12:00 – 17:00	Registration at Aarhus International Sailing Center
		18:00	Mandatory “Skipper’s meeting”
		19:00 – 22:00	Official Sail away dinner
Friday	August 8 <sup>th</sup>	07:00 – 10:00	Registration
		09:00	Start – Single Handed
		17:00	Start – Double Handed + Fully Crewed

## 3 Registration and documents

All competitors must register at the Race Office, located in Aarhus International Sailing Center, Esther Aggebos Gade 80A, 8000 Aarhus C not later than one (1) hour before start.

At registration a complete crew list and safety self-declaration must be presented. This document can be found on the Official Notice Board.

## 4 Mandatory Skipper’s meeting

The skipper’s meeting will take place at Aarhus International Sailing Center, Esther Aggebos Gade 80A, DK 8000 Aarhus C. See schedule.



## 5 Messages to competitors

- 5.1 Messages for the participants concerning relevant changes, corrections and warnings are continuously displayed on the Official Notice Board.
- 5.2 Important messages in connection with the start will be announced via VHF channel 72.

## 6 The course

All marks or islands to be left to starboard (except Start):

- **Start** (See Race Instructions 9)
- **Skagen – cardinal BYB** – approx. position 57°43,9' N – 10°42,4' E
- **Sjælland**
- **Christiansø and Bornholm**
- **Falster and Lolland** (Gedser)
- **Funen**
- **Finish in Aarhus** (see Race Instruction 15)

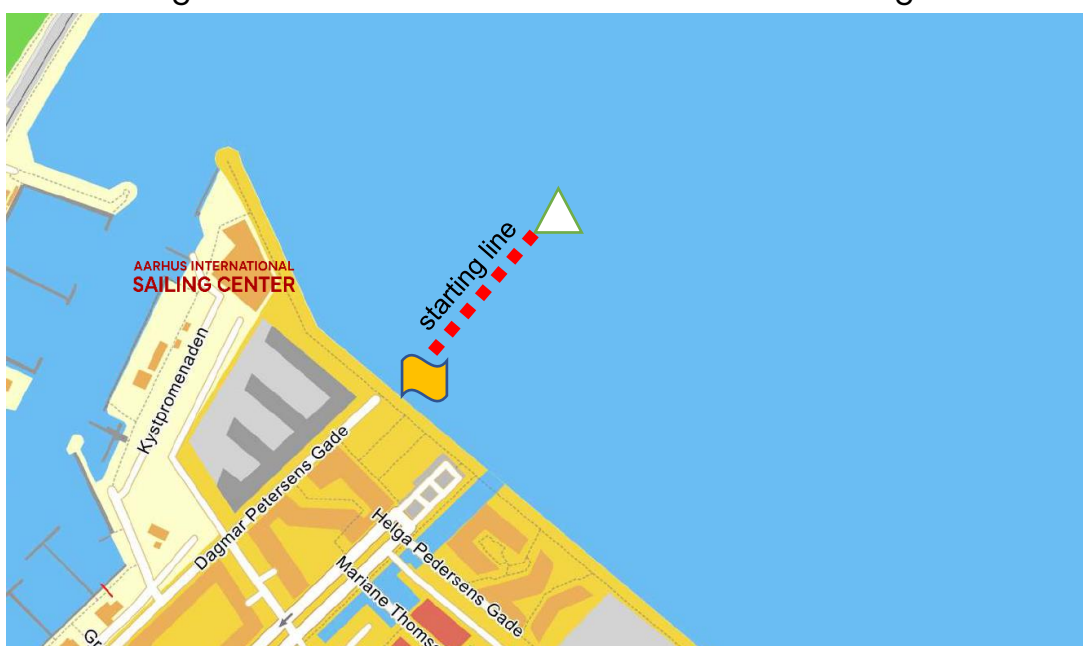
Under special circumstances the event management may decide to reverse the course leaving all marks or islands to port and in reversed order. This will be announced at the skipper's meeting.

## 7 Time limit

The time limit for completion of the race is Sunday August 16<sup>th</sup> at 17:00 CEST.

## 8 Starting area

- 8.1 The starting area will be East of Aarhus International Sailing Center.



## 9 Starting line

- 9.1 The starting line will be between an orange flag on shore and a conical white GARMIN mark.
- 9.2 The starting line must be crossed from west towards east.

## 10 Starting signals

Time	Visual signal displayed ↑	Visual signal lowered ↓	Sound signal	Meaning
<b>T - 5</b>	<b>5</b> ↑	none	●	5 minutes to start
<b>T - 4</b>	<b>4</b> ↑	<b>5</b> ↓	●	4 minutes to start
<b>T - 3</b>	<b>3</b> ↑	<b>4</b> ↓	●	3 minutes to start
<b>T - 2</b>	<b>2</b> ↑	<b>3</b> ↓	●	2 minutes to start
<b>T - 1</b>	<b>1</b> ↑	<b>2</b> ↓	—	1 minute to start
<b>0</b>	↑	<b>1</b> ↓	●	Starting signal

## 11 Individual Recall (Jumping the gun)

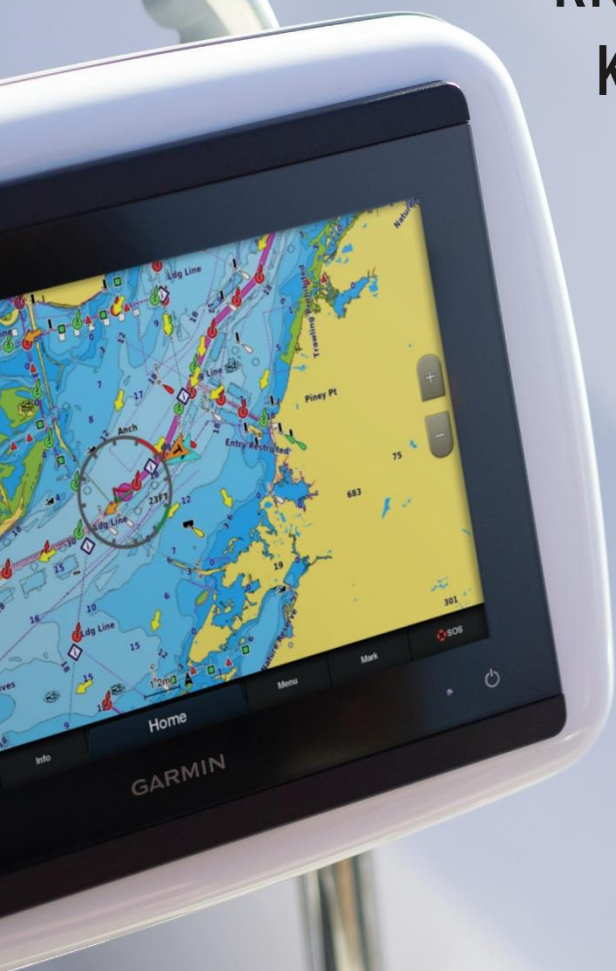
There will be NO recalls. If any part of the hull, of a boat is on the course side of the starting line the boat will be penalized by 30 minutes in its finishing time. No boats are allowed to return to restart.

**GARMIN.**

# KNOW THE WATER, KNOW THE WAY

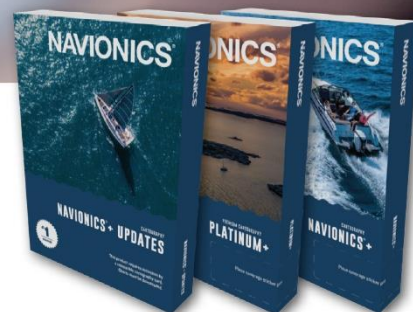
WITH THE #1 CHOICE  
IN MARINE MAPPING

(Based on 2023 reported sales)



FOR GARMIN CHARTPLOTTERS

See all the best places water can take you  
with the most up-to-date marine chart data available  
– plus advanced autorouting to help you  
plot your best course



FOR THIRD-PARTY CHARTPLOTTERS

## 12 Postponement

- 12.1 If a start is postponed, information will be given by the race management on VHF channel 72.
- 12.2 If a start is postponed while ashore, signal AP (+ two sound signals) will be displayed in the signal mast north of the Sailing Center. Further instructions will be communicated.

## 13 Late starters

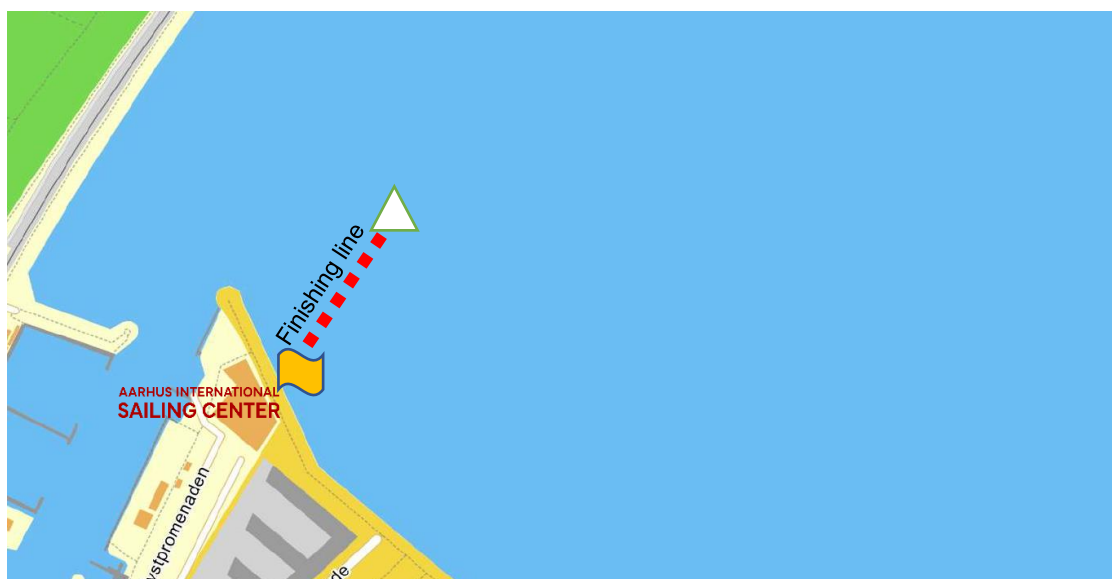
Boats starting more than 30 minutes after the starting signal will be noted: Did Not Start.  
Anyhow, if there is a good reason for the late start this must be communicated to the race management via VHF channel 72 or by phone to +45 5383 7827.

## 14 Finishing

At least 30 minutes before the expected finishing time in Aarhus, participants **must** report an ETA to the race management. This may be done by VHF channel 72 or text message (SMS) to +45 5383 7827.

## 15 The finishing line

Between an orange flag on the balcony of the Aarhus International Sailing Center and a conical mark with GARMIN advertising.  
When finishing the line must be crossed from east towards west.  
Be aware of the limitations at the breakwaters.





## **16 Withdrawal from the race**

A skipper/boat that withdraws from the race or in any other way suspends the race is obliged to state this to the race management on phone number: +45 5383 7827 or text message (SMS) as soon as possible. When staying more than 24 hours in a harbour a boat will be considered to have withdrawn from the race.

## **17 Compensation for assistance to at boat in need**

All participants in GRDR are obliged to give all possible assistance they can for any person or vessel in danger. If such assistance is given during the race, a time compensation can be requested. The request must be based on a statement clarifying that your final ranking in GRDR has been considerably affected because of the assistance provided.

## **18 Observing and reporting breaches of rules**

- 18.1 A boat observing a breach of a rule related to the Garmin Round Denmark Race may report this observation to the race management by text message (SMS) to +45 5383 7827.
- 18.2 Further action, if any, will then be taken by the event management.
- 18.3 Penalties for breaches reported by a competitor or observed by the event management is at the discretion of the event management and may be anything from a warning, a time penalty, or a disqualification.

## **19 Media rights**

By participating in the GRDR race competitors automatically grant to the event management and its sponsors the right in perpetuity to make, use and show, from time to time at their discretion, any pictures, SoMe content, motion pictures and live, taped or filmed television and other reproductions made by the competitors during the period of the competition without any compensation.

### **Useful contacts:**

Race management (Bridge) phone or SMS: +45 5383 7827

Can be called 24/7 during the entire race.

Race management (Bridge) e-mail: [raceoffice@aarhussejlsportscenter.dk](mailto:raceoffice@aarhussejlsportscenter.dk)



CLEAN HELM.  
TOTAL CONTROL.



## GARMIN ONEHELM™

EMPIRIBUS DIGITAL SWITCHING IS PART OF GARMIN'S VISION OF ONEHELM™, WHICH BRINGS TOGETHER ALL THE BOAT'S SYSTEMS ACROSS MANUFACTURERS.

© Garmin Ltd. or its subsidiaries. All rights reserved.

Photo credit: X-Yachts/Liquid Words Marine Communications.

GARMIN® × **X-Yachts**®  
WORLD CLASS SINCE 1979